



EXHAUST GAS RECIRCULATION SYSTEMS

Prod. Group No. 1080



Components of EGR systems for the automotive industry



High corrosion resistance

- stainless steel (AISI 316, 410)
- bronze

High temperature resistance

- < 750°C (stainless)
- < 450°C (bronze)

Net-shape design in P/M

- avoids machining operations
- high precision & repeatability
- low weight design
- cost-effectiveness
- multi-level part design

Good weldability

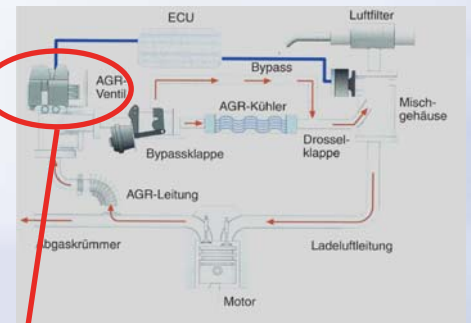
- low carbon materials

Low friction & best efficiency

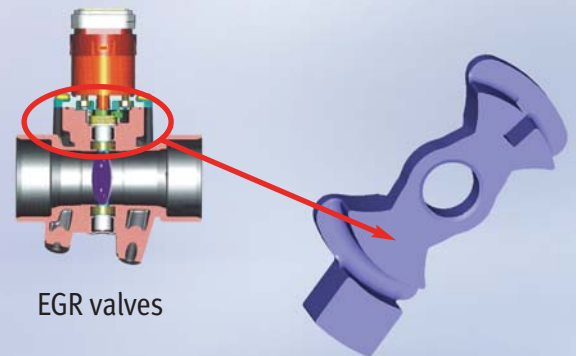
- stainless with bronze
- best surface quality (coined)

Custom-tailored design

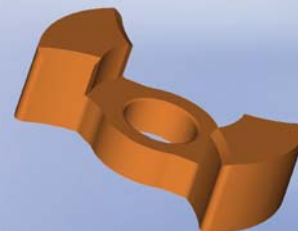
- according to customer drawing



EGR System



EGR valves



GKN sintered parts

EXHAUST GAS RECIRCULATION SYSTEMS

GKN Engineering Support

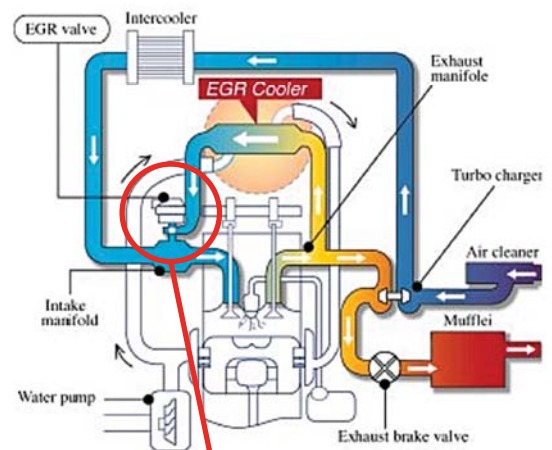


From technical questionnaire to proposal of feasible P/M design

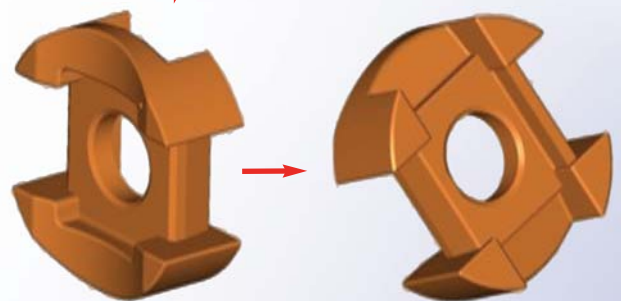
- FEA calculation
- optimized design / specific P/M solution
- first sample / prototype delivery

Materials testing & research

- GKN TechCenter with vast capabilities for testing and analysis



EGR valve



GKN sintered parts