



## GKN MIM APPLICATIONS

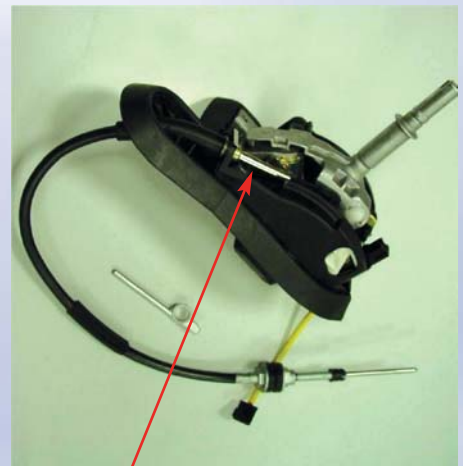
Prod. Group No. 6060



### Connector Components

- Support of component design using the full potential of MIM technology
- Technical support helping customers with the development of new products. This includes methods such as feasibility studies, simulation tools, FEA analysis and FMEA
- Close dimensional and positional tolerances
- Excellent surface finish
- High precision and reliability
- Excellent strength

#### Tube connector + steel wire



## GKN MIM APPLICATIONS

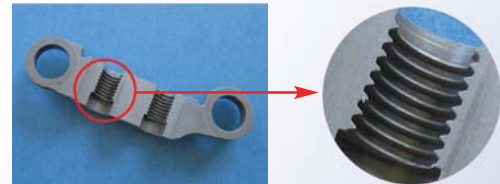
### MIM Components for Connector Systems

- Reproduceable as-moulded geometries
- 3-D complexity
- Isotropic small-grained microstructure
- High ductility and fatigue strength
- Tensile strength > 950 MPa
- In-process moulded thread
- Verification of component design using FEA analysis, simulation tools, prototype manufacture and FMEA
- Conversion from machining to MIM reducing weight and costs

### Hinges



### Thread connector



### Soft bearing in hybrid application



### Bearing seat is moulded in soft polymer

