



CLUTCH COMPONENTS

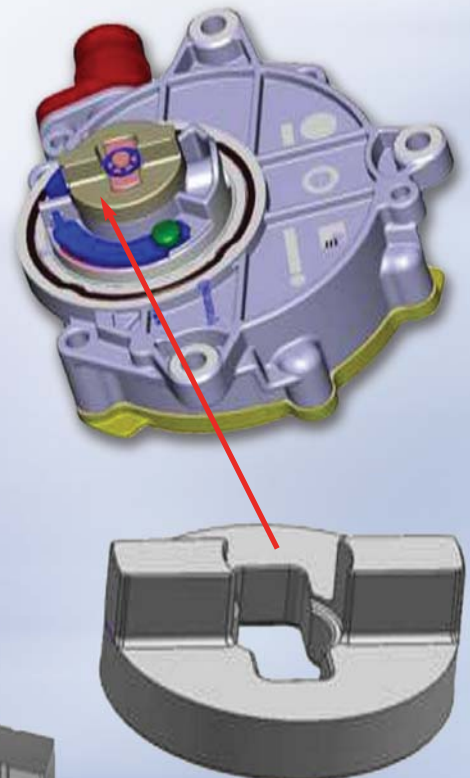
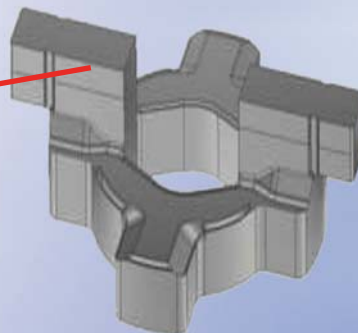
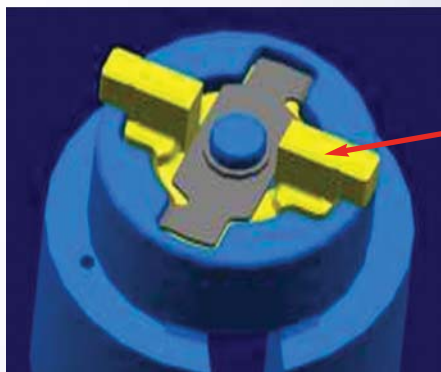
Prod. Group No. 5060



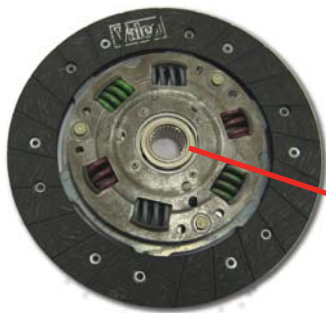
Clutch components for automotive and industrial applications

Advantages:

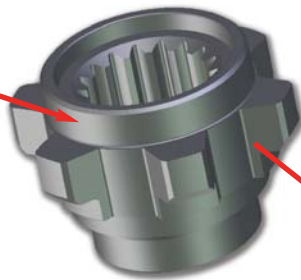
- complex geometries for improved performance of powder metal parts
- high torque resistance
- close dimensional tolerances
- high wear resistance
- net-shape manufacturing
- cost effectiveness



CLUTCH COMPONENTS



Clutch disk

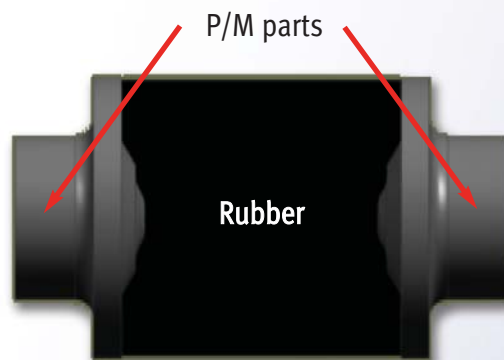


Clutch hubs

- Special application: sintered parts can be connected with vulcanized rubber
- The application of P/M parts is widespread in the rubber and plastics industries
- P/M parts are precisely fitting around inserts
- Optimized fit by special surface treatment



Plastic part connecting two sintered parts



Sintered parts connected with vulcanized rubber

© Copyright by GKN Sinter Metals - Febr. 08